



Systech Engineering Ltd.

COMPANY PROFILE

Innovating in Electrical, Mechanical, and Industrial Automation with cutting-edge technology and skilled expertise.



+88 09613-750 750
+88 01713-696 324



Email
info@systechbd.net



Website
www.systechbd.net

ABOUT COMPANY



Systech Engineering Ltd., established in 2017, is a premier multi-functional company specializing in Electrical, Mechanical, solar energy and Industrial Automation. With a commitment to innovation and quality, we leverage cutting-edge technology and a highly skilled workforce to deliver comprehensive solutions tailored to our clients' diverse needs.

Our expertise spans a wide range of services, including the design and installation of electrical systems, mechanical solutions, and advanced automation processes. We take pride in our ability to enhance operational efficiency, safety, and reliability across various sectors, including residential, commercial, and industrial projects.

At Systech, we believe in investing in our people, fostering a culture of continuous improvement and professional development. Our team of qualified professionals is dedicated to delivering projects on time and within budget, consistently seeking alternative solutions that align with our clients' objectives.

As we continue to grow and evolve, we remain committed to shaping a sustainable and technologically advanced future, making a positive impact in the communities we serve.



MISSION



VISION

At Systech Engineering Ltd., our mission is to provide innovative, reliable solutions in Industrial Automation, Building Management Systems (BMS), Solar Energy, Busbar Trunking, and Erection & Commissioning. We are dedicated to enhancing operational efficiency and sustainability for our clients by delivering tailored engineering services with a focus on safety, quality, and integrity.

Our vision is to be at the forefront of technological advancements in engineering, recognized for driving sustainable growth and innovation. We aim to empower industries with smarter, energy-efficient solutions, becoming a trusted partner in transforming infrastructure and operations through cutting-edge technologies and unmatched expertise.

Our Commitment

We are committed to delivering exceptional engineering solutions through continuous innovation, investing in our people and technology, and exceeding client expectations. Our focus on quality, safety, sustainability, and ethical practices ensures that we provide reliable and efficient services. We prioritize long-term partnerships with our clients, aiming to deliver tailored solutions that meet their specific needs while contributing to the growth of industries and the well-being of communities. At Systech, we believe in shaping a future driven by technology and guided by responsibility.

"Sale is not the end of our business, It's start of our Responsibility"



MESSAGE FROM CHAIRMAN

At Systech Engineering Ltd., we are committed to driving innovation and excellence in every project we undertake. Since our inception, we have strived to provide cutting-edge engineering solutions, whether it's in electrical, mechanical, or industrial automation. Our focus has always been on creating sustainable and efficient solutions that align with our motto: *Engineering for a better tomorrow.*

As we continue to grow, our vision remains steadfast—to deliver world-class services that not only meet but exceed the expectations of our clients. We believe in fostering long-term partnerships through integrity, professionalism, and a dedication to quality. Our diverse, highly-skilled team is at the forefront of every challenge, ensuring that our clients receive the best possible outcomes.

We look forward to continuing this journey with you and achieving greater heights together.

Md. Masud Karim

Chairman



MESSAGE FROM MANAGING DIRECTOR

Welcome to Systech Engineering Ltd.—a company built on trust, innovation, and the commitment to serving you better. From the beginning, our mission has been simple: to provide solutions that not only meet but exceed our clients' expectations. Whether you're seeking electrical, mechanical, or industrial automation services, we are here to deliver with precision and professionalism.

We know that every project comes with its own set of challenges, and that's why we approach each one with a customized solution designed around your specific needs. Our dedicated team of experts is always ready to work alongside you, ensuring that your project is handled with care and completed to the highest standards.

At Systech, we believe in partnerships, not just transactions. Your success is our success, and we are proud to play a role in helping you achieve your goals. As we continue to grow, we remain committed to providing the reliable and innovative solutions that have defined us since day one.

We look forward to serving you and building a future together.

Engr. Raihanul Islam

Managing Director

COMPANY INFORMATION

Company Name	Systech Engineering Ltd.
Motto	Engineering for better tomorrow
Incorporation No.	C-170655/2021
Trade License No.	TRAD/DNCC/102058/2022
Electrical Contractor License No.	C20230008669 (Class-ABC, Under ELB, Bangladesh)
TIN No.	186280794449
BIN No.	004278771-0401
Business Function	1st Class Contractor & Engineering Service Provider
Dynamic Teams	- Management Team
	- Technical Team
	- R&D Team
	- Business Development Team
	- Product Sourcing & Supply Team
Total Team Members	35 (Thirty Five)
Areas of Expertise	Electrical Engineering, Mechanical Engineering, Solar Energy, Industrial Automation, Building Management System
Core Services	- Industrial Automation
	- Building Management Systems (BMS)
	- Solar Energy Systems
	- Busbar Trunking Systems
	- Erection, Testing & Commissioning
Corporate Office	House: 8/A, Road: 7/A, Sector: 09, Uttara, Dhaka-1230, Bangladesh
Company Hotline	- Information: (+88) 09613-750750
	- Sales: (+88) 01718-451243
	- Support: (+88) 01707-680127
Company E-mail	info@systechbd.net
Web Address	www.systechbd.com
Yearly Turnover	250M BDT (BDT Two Hundred Fifty Million)

Engineering Solutions:

- » Electrical Turnkey Solutions
- » Sub-Station (MV & LV)
- » HT, LT, PFI, MDB, SDB Panel
- » PCC & MCC Panels
- » PLC / SCADA Panel
- » VFD / Starter Panel
- » Residential & Industrial Lighting
- » Electro Mechanical Fabrication
- » Generator Control Panel
- » Busbar Trunking System
- » Earthing System
- » Annual Maintenance Contract

Integrated Automation:

- » Industrial Process Automation
 - » SCADA Solution
 - » PLC, HMI Supply
 - » Energy Management System
 - » Centralized Reporting System
 - » Oil Refinery Plant Automation
 - » ETP/WTP Automation
 - » Silo Automation
 - » Boiler Controls System
 - » VFD Solutions
 - » Sensor & Field Instrumentation

Building Management System (BMS):

- » HVAC Control & Monitoring
- » Lighting Control
- » Electrical Controls System
- » Security & Observation
- » Fire Alarm System
- » Plumbing & Water Monitoring
- » Control & Monitor Elevator
- » Hotel Automation System
- » BMS Operator Workstation



SOLUTIONS WE OFFER

Erection & Commissioning

- » All Kind of Sub-Station
- » Solar System
- » All Kind of Electrical Panels
- » Cable Laying & Termination
- » BBT & Cable Trunking
- » Plant Earthing & Equipment Earthing as Per Standard
- » Control System
- » Instrumentation / Sensor
- » Piping (SC, SS, GRP, P91, P22, HDDE)
- » Generator, Motor & Pump Erection
- » All Others Equipments Related to Electrification of Plant Machineries

Testing

- » Earth Resistance Test
 - » Thermographic inspection
 - » Insulation Resistance Test
 - » Hi-Pot Test

Solar Energy Solutions

- » Industrial Roof Top Solar Solution (EPC)
 - » On-grid / Off-grid Solar System
 - » Solar Irrigation System
 - » Solar Home System for Rural Areas
 - » Solar Street Light Project
 - » Installation & Commissioning
 - » Operation & Maintenance

SOLUTIONS WE OFFER



Variable Frequency Drive (VFD)

Advanced VFD systems for motor control, allowing energy-efficient operation of industrial machinery with adjustable speed drives, enhancing system performance and reducing operational costs.



PLC & HMI

Integration of Programmable Logic Controllers (PLC) and Human-Machine Interfaces (HMI) for automated control of industrial processes, improving productivity, precision, and safety.



Switchgear Components

Supply and integration of high-quality switchgear components for protection, control, and monitoring of electrical systems, ensuring safety and operational efficiency.



HT, LT, PFI, MDB, SDB Panel

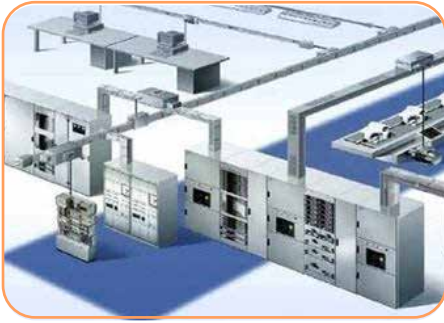
Design and installation of High Tension (HT), Low Tension (LT), Power Factor Improvement (PFI), Main Distribution Boards (MDB), and Sub Distribution Boards (SDB) for optimal electrical distribution and power factor correction.



Lightning Protection System (LPS)

Comprehensive lightning protection systems to safeguard buildings and critical equipment from lightning strikes, ensuring safety and continuity in operations.

SOLUTIONS WE OFFER



Busbar Trunking System

Efficient busbar trunking solutions for power distribution in large industrial complexes, providing compact and flexible electrical connectivity.



Cable Trunking

High-quality cable trunking solutions for the secure routing and protection of electrical cables.



Telecom Infrastructure

We provide end-to-end solutions in optical fiber network development, including point-to-point connectivity, fiber optic signaling, LAN & WAN design, OFC laying, splicing, and comprehensive OTDR testing with detailed reporting for seamless communication infrastructure.



HVAC System

Engineering and installation of Heating, Ventilation, and Air Conditioning (HVAC) systems for enhanced climate control and energy efficiency in buildings and industrial spaces.

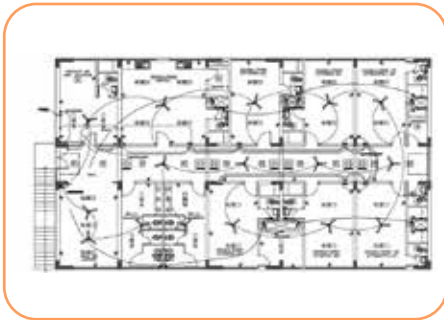


Fire Protection & Detection System

Fire detection and suppression systems to protect life, assets, and infrastructure from fire hazards, ensuring early detection and rapid response.

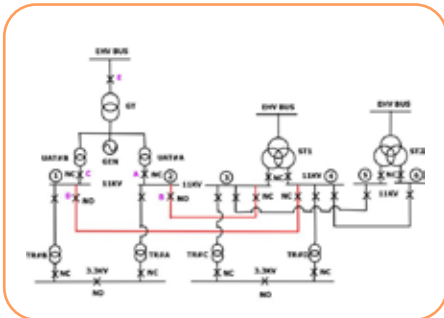
SOLUTIONS WE OFFER

DESIGN & CONSULTANCY SOLUTIONS



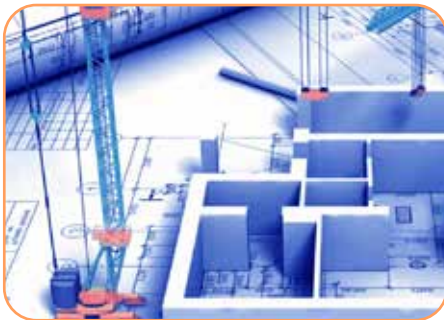
Electrical Detailing

Detailed electrical system designs, including substation layouts, circuit designs, cable routing, and load analysis, ensuring accuracy and compliance with industry standards.



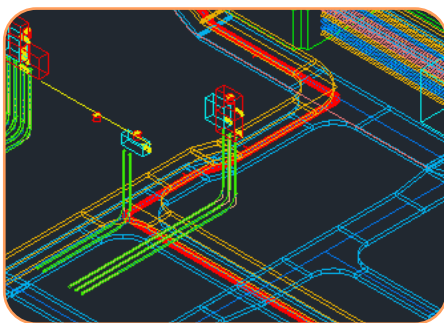
Single Line Diagram

Preparation of Single Line Diagrams (SLD) for electrical systems, providing a clear and concise overview of the power distribution network.



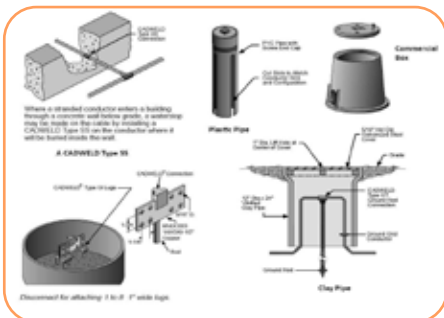
Preparing Technical Spec & BOQ

Preparation of technical specifications and Bills of Materials (BOQ) for electrical and mechanical systems, ensuring transparency and precision in project execution.



Cable Engineering

Expert cable routing and management services, ensuring optimal cable performance, minimal loss, and compliance with safety regulations.

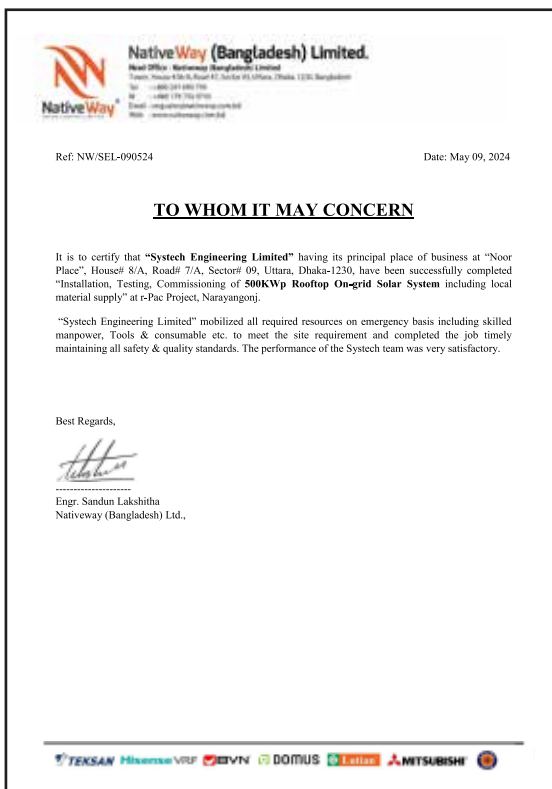
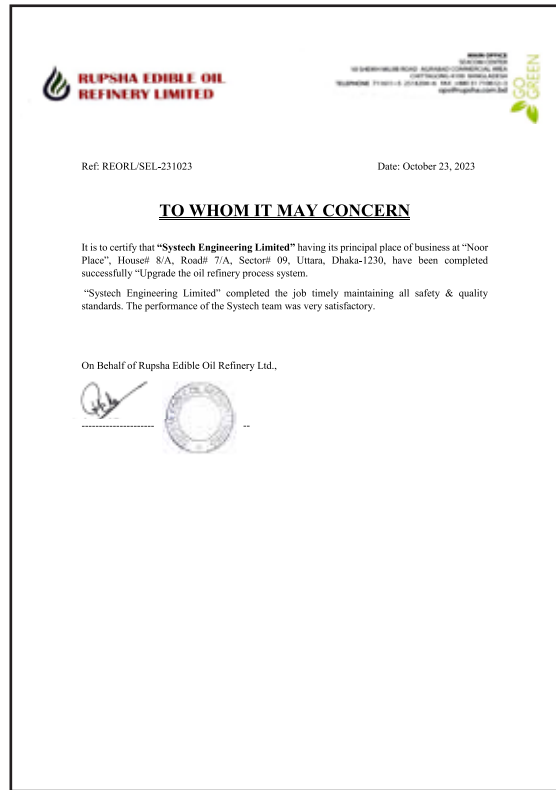


Earthing Design

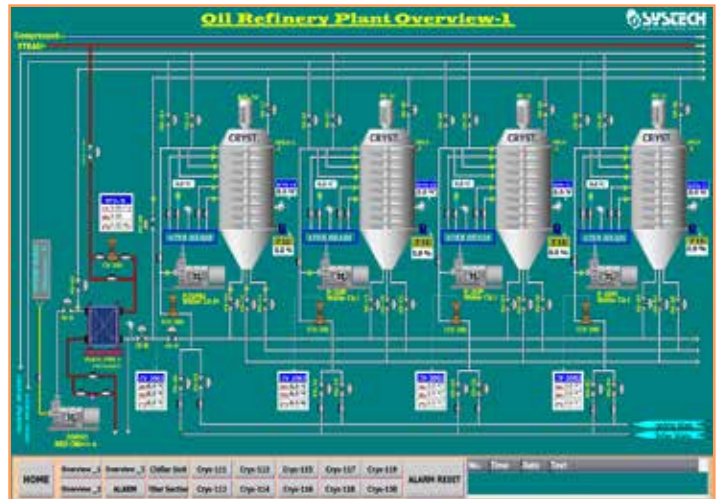
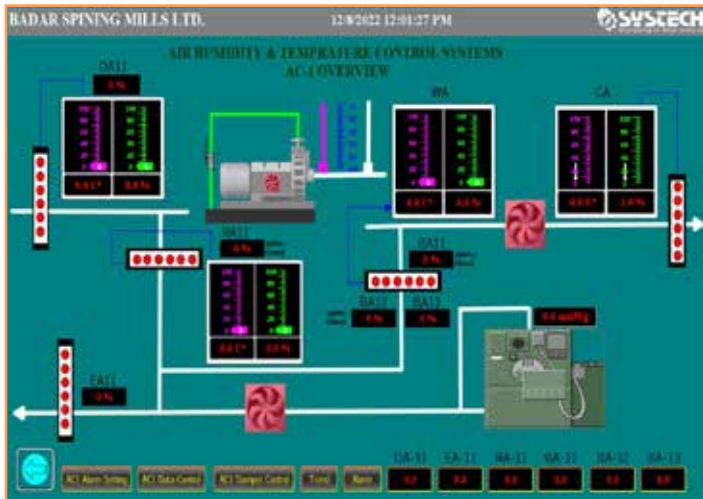
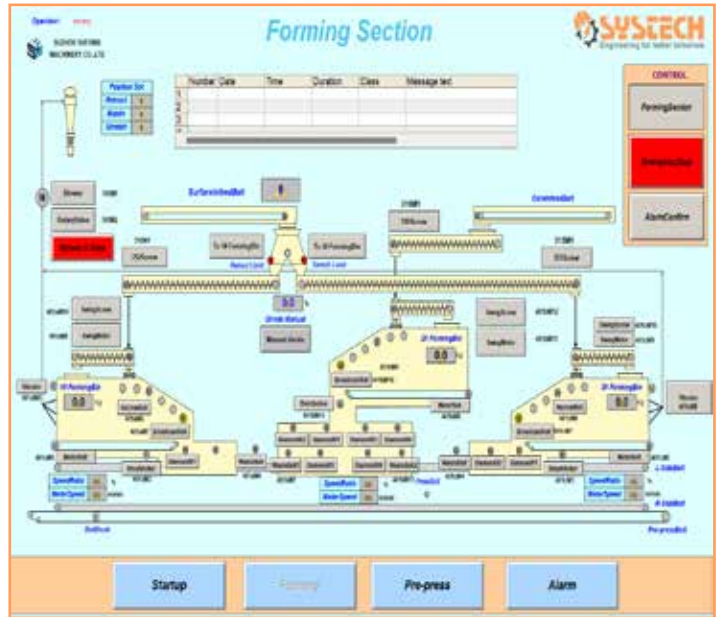
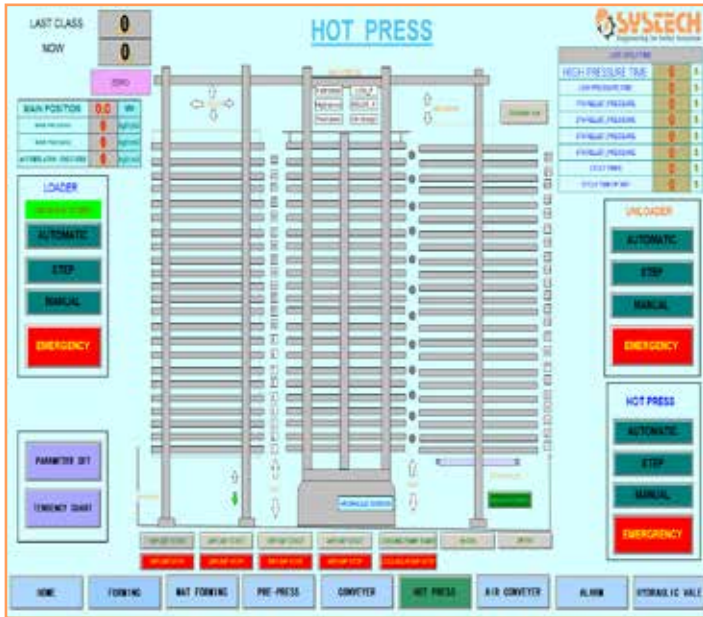
Design of earthing systems for safe electrical operation, protecting both equipment and personnel from electrical faults and surges.

TESTIMONIALS

See what our clients have to say about Systech Engineering Ltd. Read their stories and feedback about our services and solutions.



PREVIOUS WORK



PREVIOUS WORK



LIST OF SOME OF OUR CLIENTS





+88 09613-750 750
+88 01713-696 324



Email
info@systechbd.net



Website
www.systechbd.com



Address
House: 8/A, Road: 7/A, Sector: 09, Uttara, Dhaka-1230, Bangladesh

